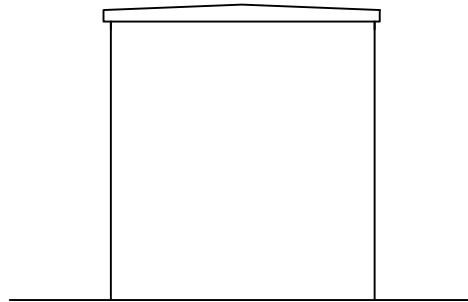
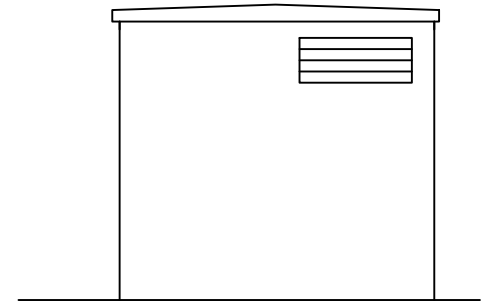


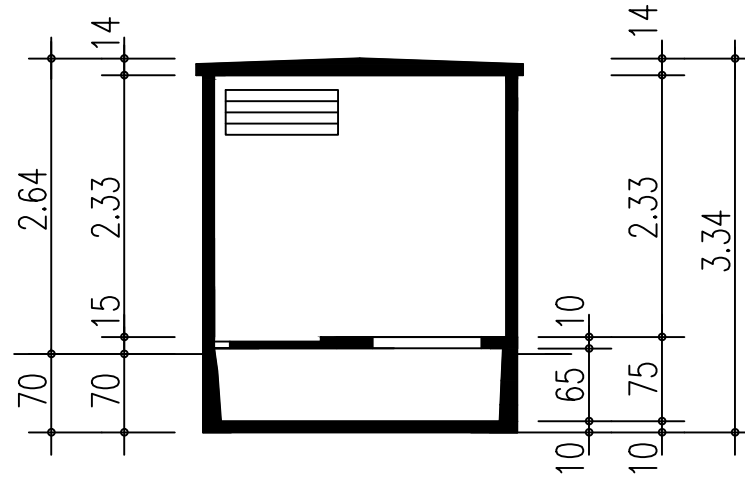
Vorderansicht



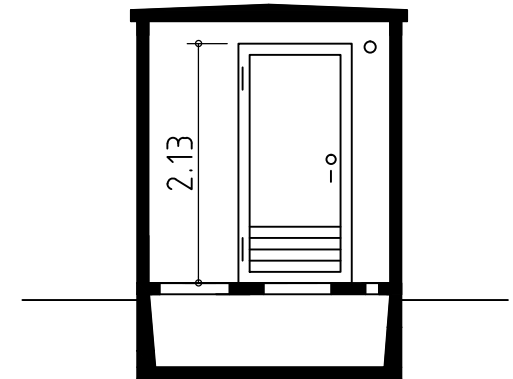
Rückansicht



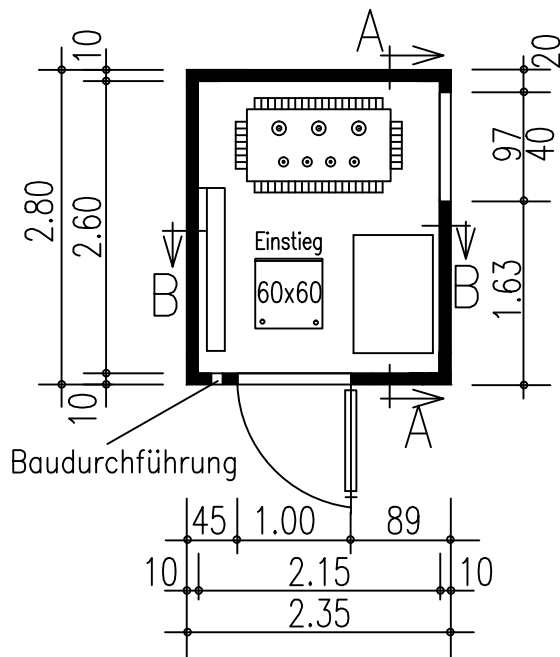
Seitenansicht



Längsschnitt A-A



Querschnitt B-B



Grundriss

Typ BE2823



Transformatorstationsgebäude aus
Stahlbetonfertigteilen System "Mokinski"

v.3.0.12

Musterzeichnung

Mokinski Technikgebäude GmbH & Co. KG
Siemensstr 7-13, 33442 Herzebrock-Clarholz
Tel.: 05245/92969- Fax.: 05245/92969-10