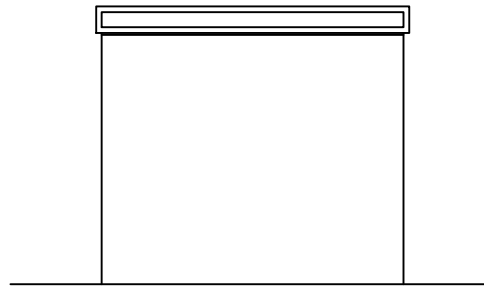
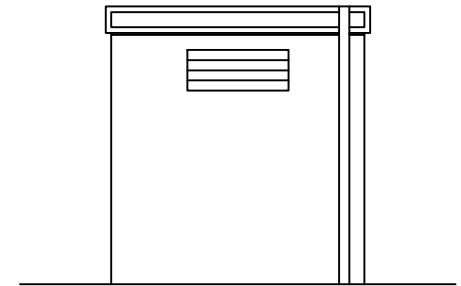


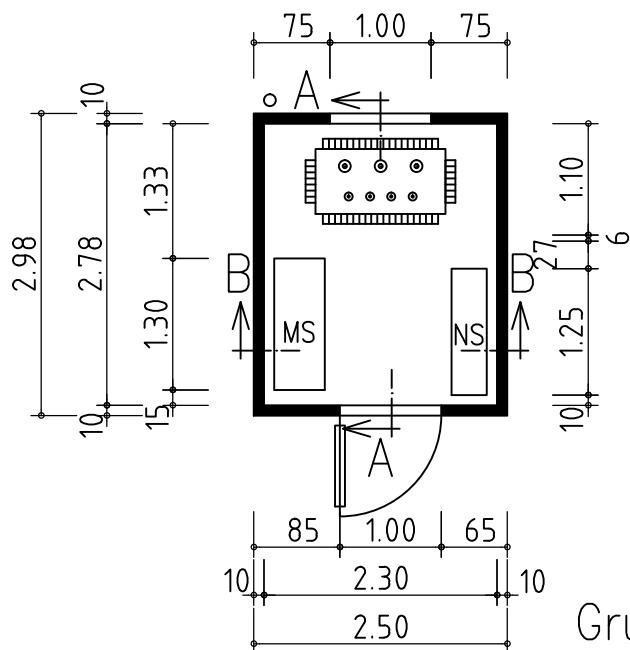
Vorderansicht



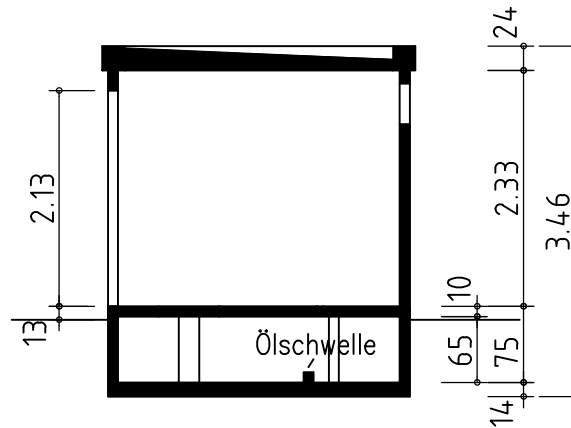
Seitenansicht



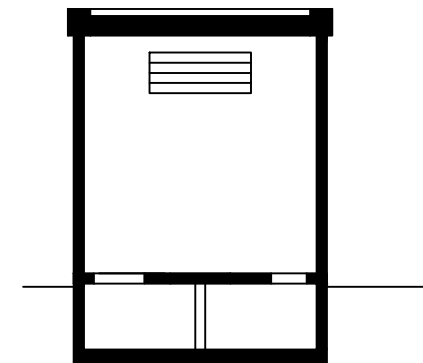
Rückansicht



Grundriss



Längsschnitt A - A



Querschnitt B - B

Typ BE3025



Transformatorstationen aus  
Stahlbetonfertigteilen System "Mokinski"

Musterzeichnung

v.3.0.12

Mokinski Technikgebäude GmbH & Co. KG  
Siemensstr 7-13, 33442 Herzebrock-Clarholz  
Tel.: 05245/92969-0 Fax.: 05245/92969-10