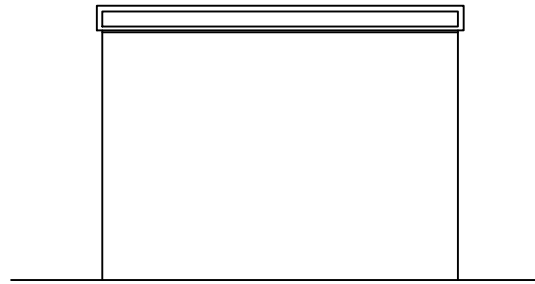
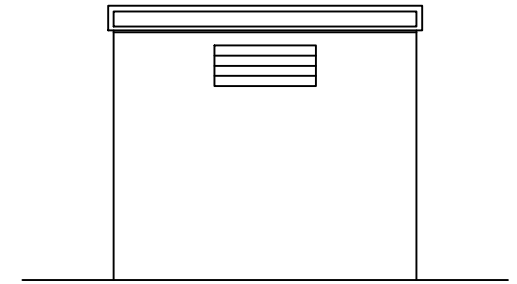


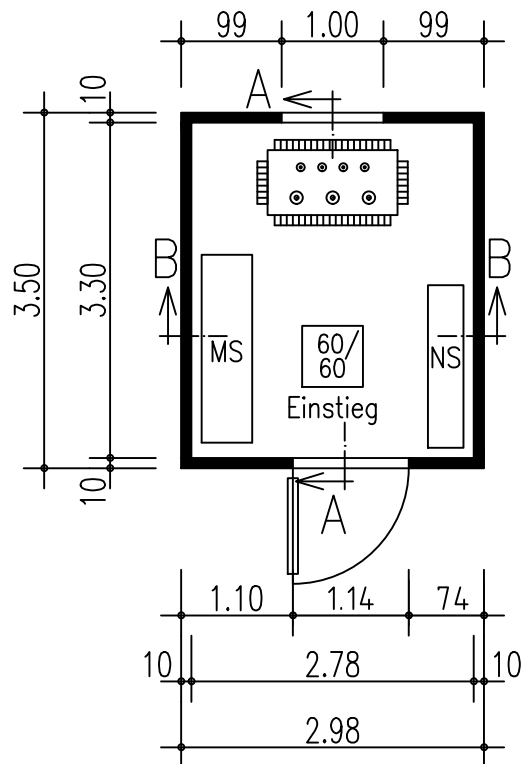
Vorderansicht



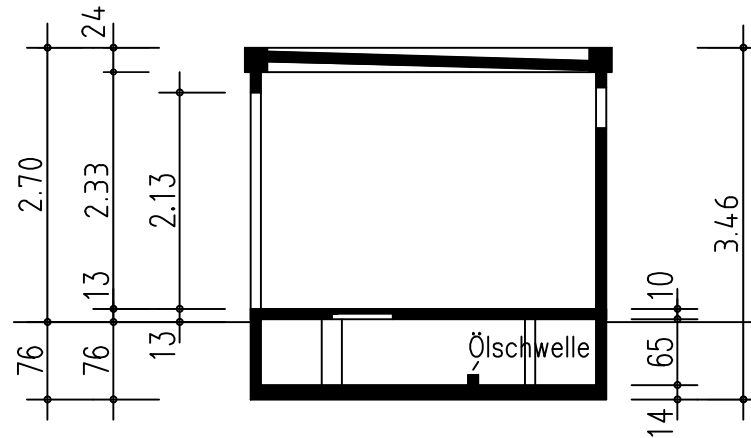
Seitenansicht links



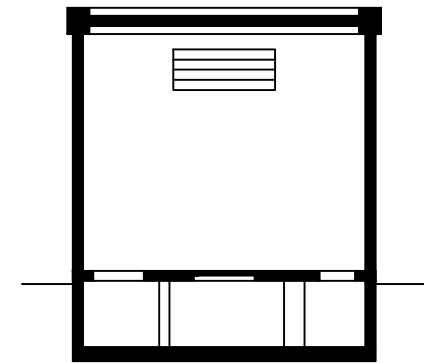
Rückansicht



Grundriss



Längsschnitt A - A



Querschnitt B - B

Typ BE3530



Transformatorstationen aus
Stahlbetonfertigteilen System "Mokinski"

v.3.0.12

Musterzeichnung

Mokinski Technikgebäude GmbH & Co. KG
Siemensstr 7-13, 33442 Herzebrock-Clarholz
Tel.: 05245/92969-0 Fax.: 05245-92969-10