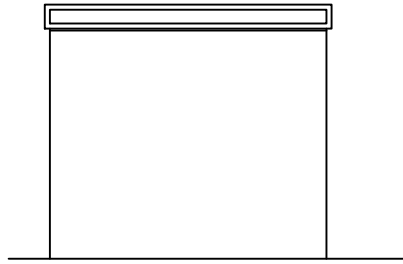
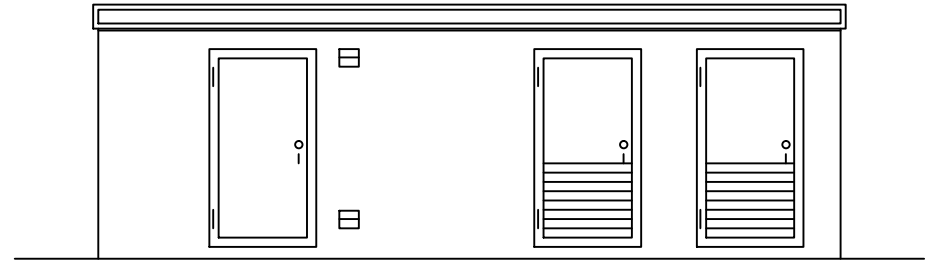


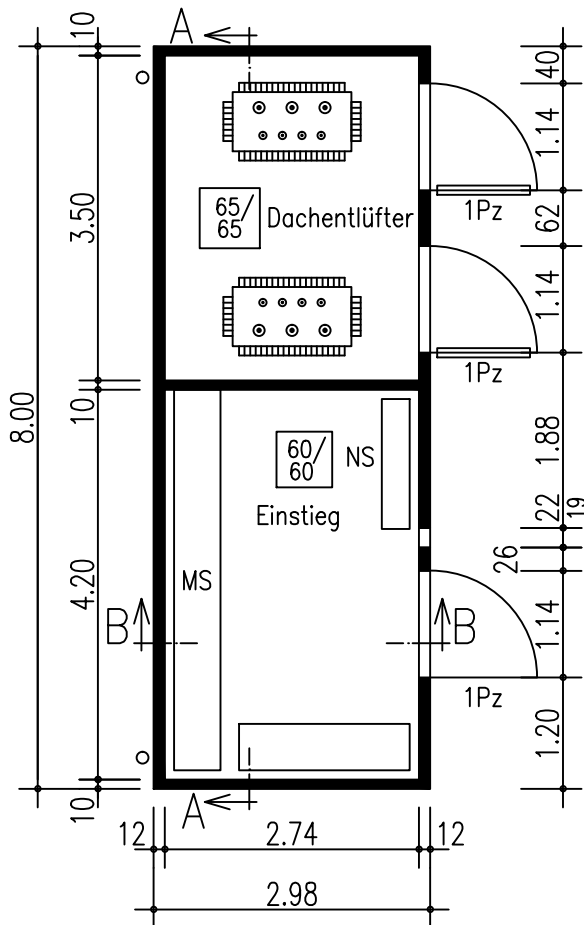
Vorderansicht



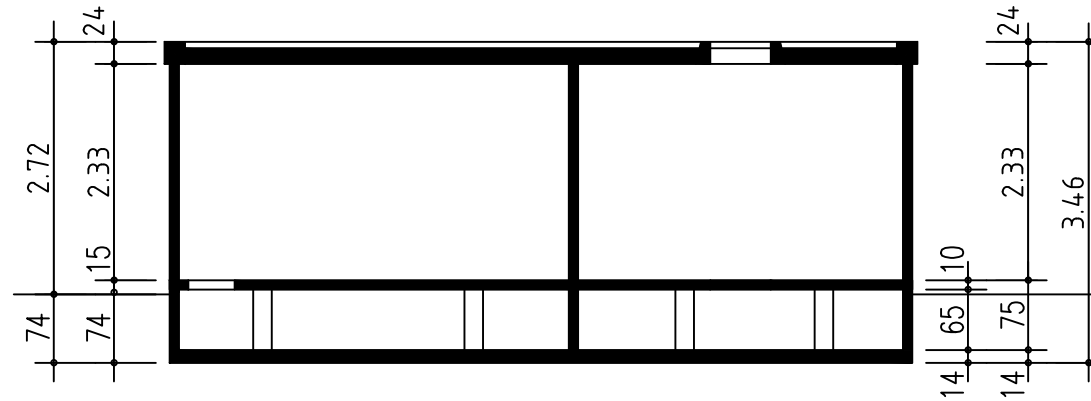
Rückansicht



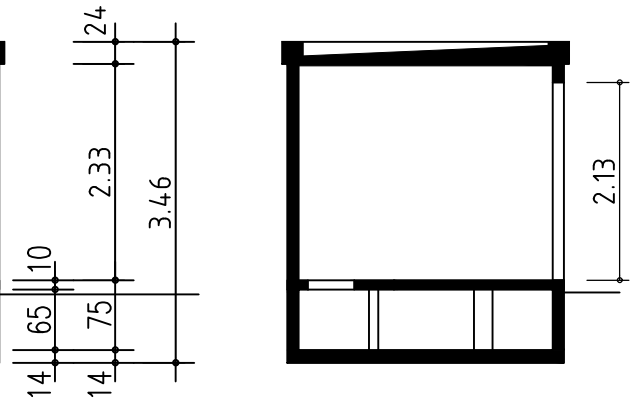
Seitenansicht



Grundriss



Längsschnitt A - A



Querschnitt B - B

Typ BE8030



Transformatorstationsgebäude aus
Stahlbetonfertigteilen System "Mokinski"

V.3.0.12

Musterzeichnung

Mokinski Technikgebäude GmbH & Co. KG
Siemensstr 7-13, 33442 Herzebrock-Clarholz
Tel.: 05245/92969-0 Fax.:05245/92969-10